

JFS

BEIJING JOINT FLOW SYSTEM CO.



PLUG VALVE

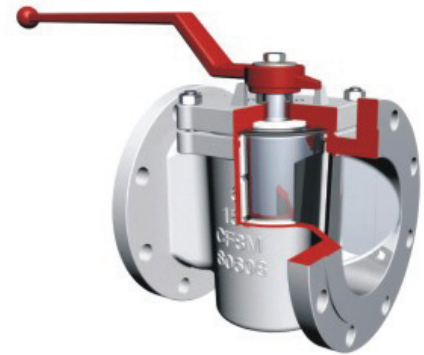


LINED PLUG VALVE

The Lined Plug Valve is designed and developed with the latest technology and therefore very suitable for the chemical process industries. The valves can provide maximum corrosion resistance and the elimination of product contamination at reasonable cost.

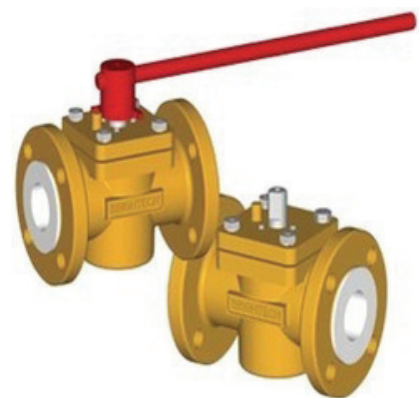
FEATURE

- Precision cast body, plug and cover: The valves use high precision investment casting method for all major pressure holding components
- Corrosion protection: The valves offer ductile iron, carbon steel or stainless steel body, plug and cover
- Two basic types: Sleeve type (PTFE or PPL sleeve), Lining type (FEP, PFA, PCTFE, or PVDF liner)
- Cavity-free design: The valves are cavity-free both in open and closed positions, no particle accumulation, ideal for corrosive slurry applications
- Flange, Butt-weld and Socket weld mounting types available
- Lever, Worm gear or Actuators operation types available



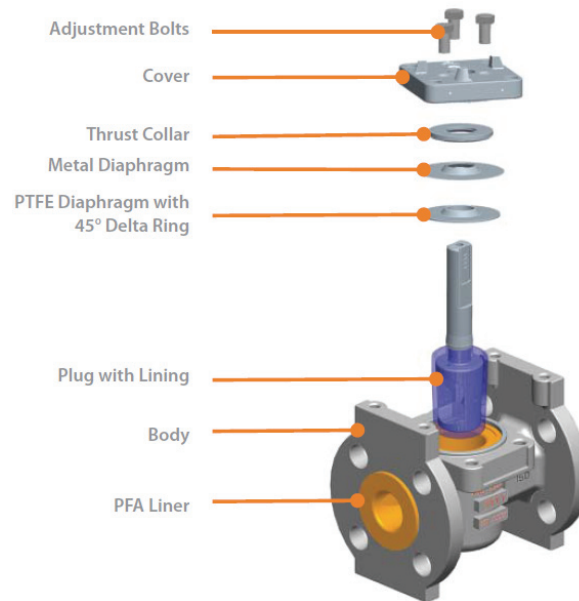
SPECIFICATION

- Nominal Diameter: 1/2"-24"(DN15~DN600)
- Pressure Range: PN 0.6~16.0MPa, Class 150~900
- Design and Manufacture: GB/T 12240, GB/T 22130, HG/T 3704, API 599, ASME B16.34
- Face-to-face Dimension: GB/T 12221, ASME B16.10, DIN 3202 S7/S12
- Flange Dimension: GB/T 17241.6, GB/T 9113.1, ASME B16.5
- Butt-weld Dimension: ASME B16.25
- Socket-weld Dimension: ASME B16.11
- Inspection and Testing: API 598, GB/T 13927



LINED PLUG VALVE

PARTS LIST & MATERIAL

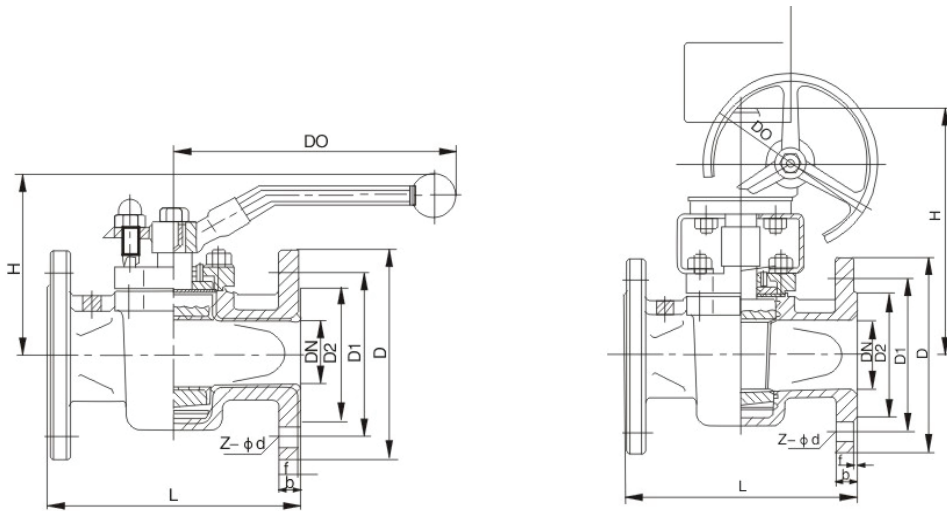


Parts Name	Ductile iron	Carbon steel	Stainless steel		Low carbon stainless steel	
Body, Cover	A536	WCB	CF8	CF8M	CF3	CF3M
Plug	WCB/AI05	WCB/AI05	CF8	CF8M	CF3	CF3M
Adjusting bolt	A182 F6a	A182 F6a	F304	F316	F304L	F316L
Lining/Seat/Sleeve			PTFE/PCTFE/PVDF/FE/PFA/PPL			
O-ring			FPM/Silicon rubber			
Adjusting gasket			RPTFE/PFA			
Bolt	A193 B7	A193 B7	A320-B8	A320-B8	A320-B8	A193 B8M
Nut	A194 2H	A194 2H	A194 8	A194 8	A194 8	A194 B8M
Lever/Worm gear			WCC/A216WCC			

*More material specifications are available on request.

LINED PLUG VALVE

DIMENSION (flange end/0.6~2.5MPa, CI 150~600)



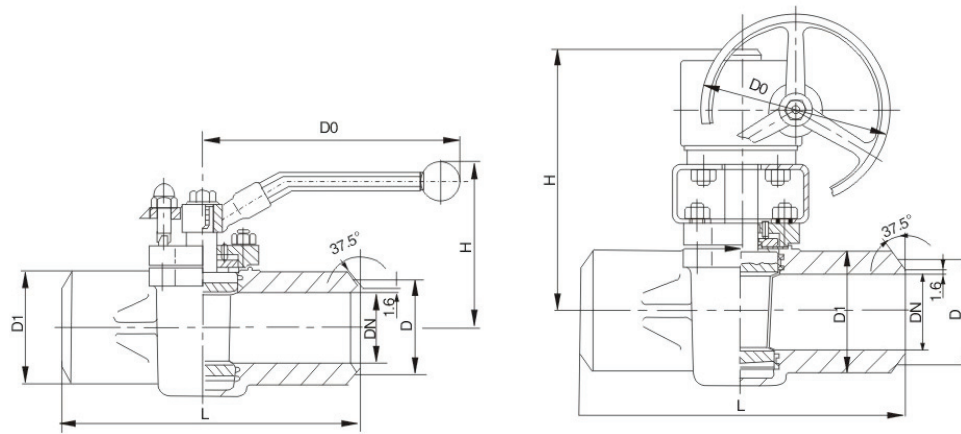
DN	NPS	L						D0		H		Weight (kg)					
		PN (MPa)		Class (Lb)			Worm	Lever	Worm	Lever	PN (MPa)			Class (Lb)			
		0.6-2.5	4.0	150	300	600					0.6-1.6	2.5	4.0	150	300	600	
15	1/2	130	140	108	140	/	/	170	/	80	1.6	2	2.3	2	2.5	/	
20	3/4	130	152	117	152	/	/	170	/	90	2.4	3	3.2	3	4	/	
25	1	140	165	127	165	216	/	200	/	100	3.4	4.2	4.8	4.5	5	7	
32	1-1/4	165	178	140	178	229	/	250	/	110	4.8	5.2	5.8	5.2	6	8.2	
40	1-1/2	165	190	165	190	241	/	250	/	120	6	7.2	8	7.5	8.5	10.8	
50	2	203	216	178	216	292	/	320	/	140	8.8	10	11	11	13	12.5	
65	2-1/2	222	241	190	241	330	/	450	/	150	11.5	12	12.5	12.5	15	15.3	
80	3	241	283	203	283	356	250	450	220	170	15.2	18	22	18	24	25	
100	4	305	305	229	305	432	250	650	250	190	18.8	23	26	23	27	29.5	
125	5	356	381	254	381	/	250	750	265	210	22.5	32	37	32	40	/	
150	6	394	403	267	403	559	320	/	365	/	48	52	58	52	65	70	
200	8	457	419	292	419	660	350	/	385	/	65	11	125	115	145	155	
250	10	533	457	330	457	787	400	/	475	/	88	19	205	195	255	260	
300	12	610	502	356	502	838	500	/	535	/	125	30	320	305	325	335	
350	14	686	762	686	762	/	500	/	610	/	185	32	350	325	355	/	
400	16	762	/	762	838	/	500	/	675	/	255	/	/	340	365	/	
450	18	864	/	864	/	/	500	/	820	/	320	/	/	365	/	/	
500	20	914	/	914	/	/	500	/	910	/	405	/	/	395	/	/	
600	24	1067	/	1067	/	/	500	/	1020	/	625	/	/	595	/	/	

*Flange dimensions refer to Catalogue of Accessory: Series 8 – Flange.

*More dimension specifications are available on request.

LINED PLUG VALVE

DIMENSION (butt-weld end/CI 150~300)



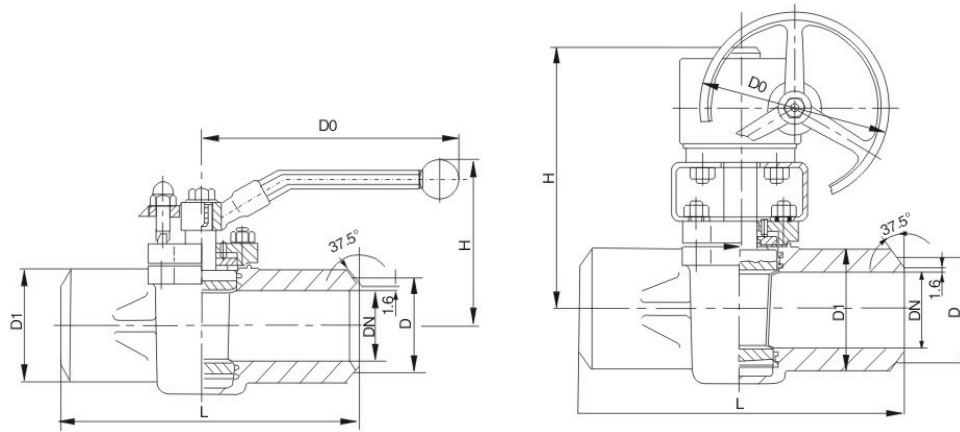
DN	NPS	L		D1		D	D0		H		Weight (kg)	
		Class 150	Class 300	Class 150	Class 300		Worm	Lever	Worm	Lever	Class 150	Class 300
15	1/2	165		28		25	/	170	/	80	3.4	3.7
20	3/4	190		33		30	/	170	/	90	4.2	4.6
25	1	216		38		35	/	200	/	100	5.8	6.2
32	1-1/4	229		45		42	/	250	/	110	6.7	7.2
40	1-1/2	241		56		50	/	250	/	120	8.4	8.9
50	2	267		70		62	/	320	/	140	9.1	9.4
65	2-1/2	305		88		75	/	450	/	150	11.8	12.3
80	3	330		104		91	250	550	220	170	13.4	14
100	4	356		126		117	250	650	250	190	26.1	27.2
125	5	381		150		144	250	750	265	210	30.2	33.5
150	6	394	457	175	185	172	320	/	365	/	48	58
200	8	457	521	226	235	223	350	/	385	/	108	130
250	10	533	559	280	290	278	400	/	475	/	180	240
300	12	610	635	332	345	329	500	/	535	/	290	315
350	14	686	762	384	395	362	500	/	610	/	311	340
400	16	762	838	435	450	413	500	/	675	/	320	350
450	18	864	914	487	502	464	500	/	735	/	355	375
500	20	914	991	540	555	516	500	/	760	/	375	388

*Face to face dimensions herein are according to ASME B16.10,

*More dimension specifications are available on request.

LINED PLUG VALVE

DIMENSION (butt-weld end/CI 600~900)



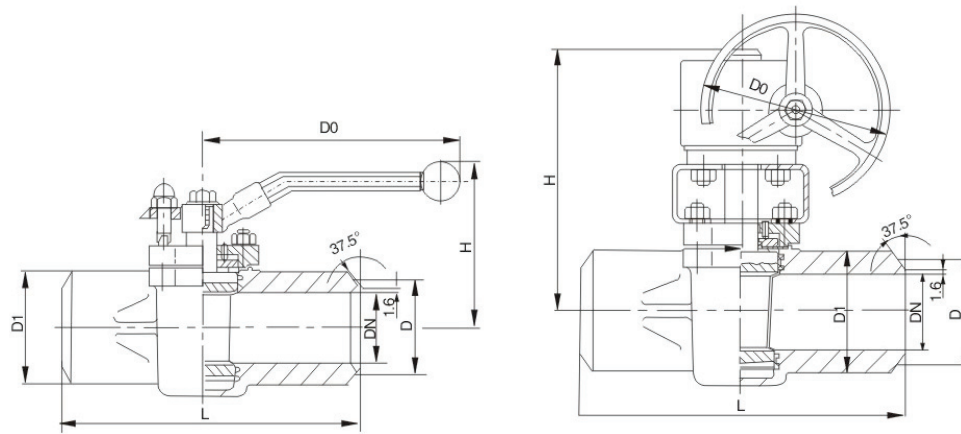
DN	NPS	L		D1		D	D0		H		Weight (kg)	
		Class 600	Class 900	Class 600	Class 900		Worm	Lever	Worm	Lever	Class 600	Class 900
15	1/2	165		31	41	25	/	170	/	80	4.1	4.7
20	3/4	190		36	46	30	/	170	/	90	4.9	5.3
25	1	216	254	41	51	35	/	200	/	100	6.6	7.4
32	1-1/4	229	279	49	61	42	/	250	/	110	7.7	8.6
40	1-1/2	241	305	59	70	50	/	250	/	120	8.6	9.6
50	2	292	368	73	88	62	/	320	/	140	10.2	11.3
65	2-1/2	330	419	89	110	75	/	450	/	150	13.1	14.1
80	3	356	381	105	118	91	250	550	220	170	15.5	16.7
100	4	432	457	132	143	117	250	650	250	190	28	26.7
125	5	508	508	163	177	144	250	750	265	210	38	42
150	6	559	610	190	202	172	320	/	365	/	63	68
200	8	660	373	252	265	223	350	/	385	/	140	150
250	10	787	838	310	325	276	400	/	475	/	245	225
300	12	838	965	365	385	329	500	/	535	/	320	333
350	14	889	1029	420	442	362	500	/	610	/	355	365
400	16	991	1130	476	505	413	500	/	675	/	364	385

*Face to face dimensions herein are according to ASME B16.10,

*More dimension specifications are available on request.

LINED PLUG VALVE

DIMENSION (butt-weld end/1.6~4.0MPa)



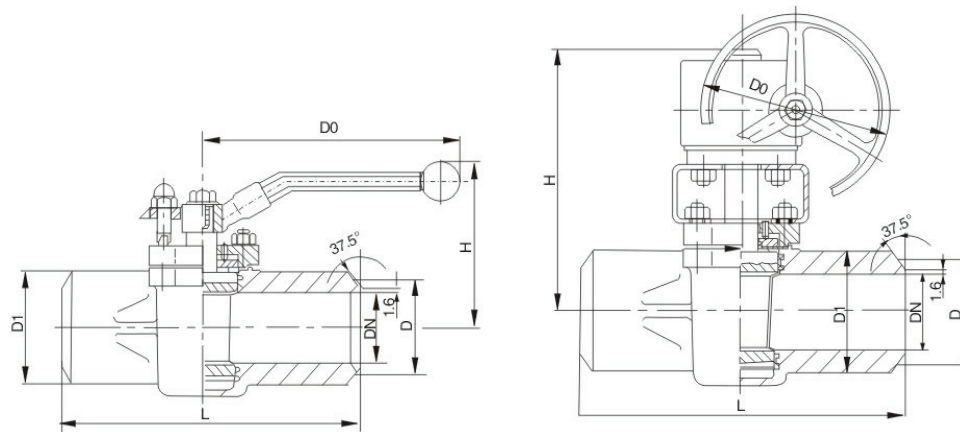
DN	NPS	L	D1		D	D0		H		Weight (kg)	
			1.6~2.5 MPa	4.0 MPa		Worm	Lever	Worm	Lever	1.6~2.5 MPa	4.0 MPa
15	1/2	130	28		25	/	170	/	80	3.4	3.7
20	3/4	150	33		30	/	170	/	90	4.2	4.6
25	1	160	38		35	/	200	/	100	5.8	6.2
32	1-1/4	180	45		42	/	250	/	110	6.7	7.2
40	1-1/2	200	56		50	/	250	/	120	8.4	8.9
50	2	230	70		62	/	320	/	140	9.1	9.4
65	2-1/2	290	88		75	/	450	/	150	11.8	12.3
80	3	311	104		91	250	550	220	170	13.4	14
100	4	350	126		117	250	650	250	190	26.1	27.2
125	5	400	150		144	250	750	265	210	30.2	33.5
150	6	480	175	185	172	320	/	365	/	48	58
200	8	600	226	235	223	350	/	385	/	108	130
250	10	730	280	290	278	400	/	475	/	180	240
300	12	850	332	345	329	500	/	535	/	290	315
350	14	980	384	395	362	500	/	610	/	311	340
400	16	1100	435	450	413	500	/	675	/	320	350
450	18	1180	487	502	464	500	/	735	/	355	375
500	20	1250	540	555	516	500	/	760	/	375	388

*Face to face dimensions herein are according to DIN 3202 S7.

*More dimension specifications are available on request.

LINED PLUG VALVE

DIMENSION (butt-weld end/10.0~16.0MPa)



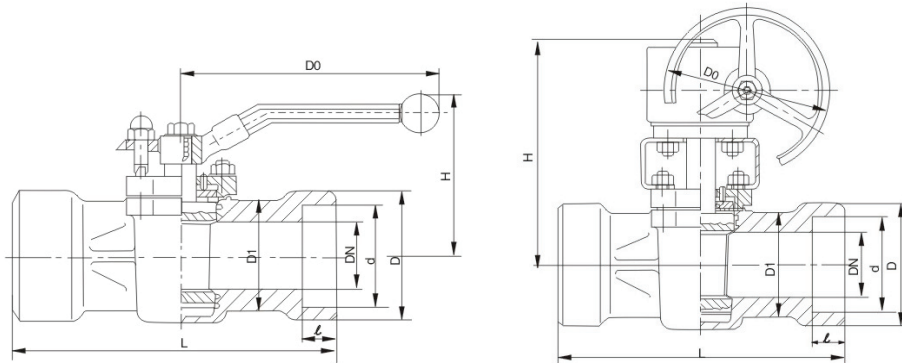
DN	NPS	L	D1		D	D0		H		Weight (kg)	
			10.0 MPa	16.0 MPa		Worm	Lever	Worm	Lever	10.0 MPa	16.0 MPa
15	1/2	165	31	41	25	/	170	/	80	4.1	4.7
20	3/4	190	36	46	30	/	170	/	90	4.9	5.3
25	1	216	41	51	35	/	200	/	100	6.6	7.4
32	1-1/4	229	49	61	42	/	250	/	110	7.7	8.6
40	1-1/2	241	59	70	50	/	250	/	120	8.6	9.6
50	2	292	73	88	62	/	320	/	140	10.2	11.3
65	2-1/2	330	89	110	75	/	450	/	150	13.1	14.1
80	3	356	105	118	91	250	550	220	170	15.5	16.7
100	4	432	132	143	117	250	650	250	190	28	28.7
125	5	508	163	177	144	250	750	265	210	38	42
150	6	559	190	202	172	320	/	365	/	63	68
200	8	660	252	265	223	350	/	385	/	140	150
250	10	787	310	325	278	400	/	475	/	245	225
300	12	838	365	385	329	500	/	535	/	320	333
350	14	889	420	442	362	500	/	610	/	355	365
400	16	991	476	505	413	500	/	675	/	364	385

*Face to face dimensions herein are according to DIN 3202 S12.

*More dimension specifications are available on request.

LINED PLUG VALVE

DIMENSION (socket-weld end/CI 150~300)



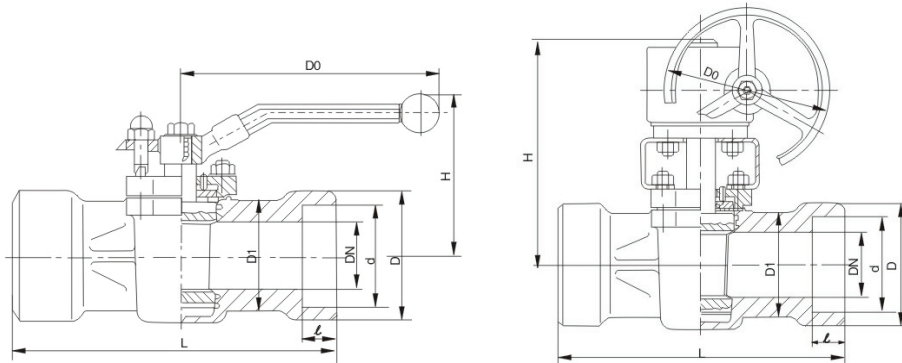
DN	NPS	L		D1		D	D0		H		Weight (kg)	
		Class 150	Class 300	Class 150	Class 300		Worm	Lever	Worm	Lever	Class 150	Class 300
15	1/2	165		28		32	/	170	/	80	3	3
20	3/4	190		33		38	/	170	/	90	3.5	4.1
25	1	216		38		46	/	200	/	100	5.3	5.8
32	1-1/4	229		45		55	/	250	/	110	6.1	6.4
40	1-1/2	241		56		63	/	250	/	120	7	7.4
50	2	267		70		76	/	320	/	140	7.3	9
65	2-1/2	305		88		95	/	450	/	150	11	12
80	3	330		104		114	250	550	220	170	13	14.3
100	4	356		126		146	250	650	250	190	26.1	27.2
125	5	381		150		172	250	750	265	210	30.2	33.5
150	6	394	457	175	185	200	320	/	365	/	48	58
200	8	457	521	226	235	251	350	/	385	/	108	130
250	10	533	559	280	290	305	400	/	475	/	180	240
300	12	610	635	332	345	360	500	/	535	/	290	315
350	14	686	762	384	395	395	500	/	610	/	311	340
400	16	762	838	435	450	450	500	/	675	/	320	350
450	18	864	914	487	502	500	500	/	735	/	355	375
500	20	914	991	540	555	560	500	/	760	/	375	388

*Face to face dimensions herein are according to ASME B16.10,

*More dimension specifications are available on request.

LINED PLUG VALVE

DIMENSION (socket-weld end/CI 600~900)



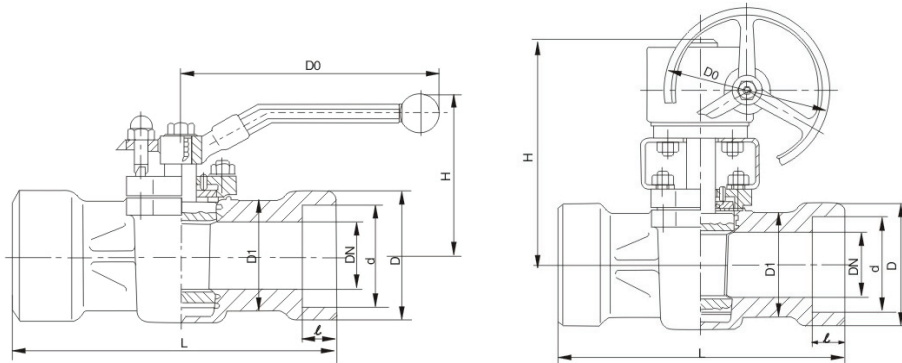
DN	NPS	L		D1		D		D0		H		Weight (kg)	
		Class 600	Class 900	Class 600	Class 900	Class 600	Class 900	Worm	Lever	Worm	Lever	Class 600	Class 900
15	1/2	165		31	41	32	41	/	170	/	80	3.7	4.3
20	3/4	190		36	46	38	46	/	170	/	90	4.4	4.9
25	1	216	254	41	51	46	51	/	/	/	100	6.1	7
32	1-1/4	229	279	49	61	55	61	/	/	/	110	7.2	8.1
40	1-1/2	241	305	59	70	63	70	/	/	/	120	8.1	9
50	2	292	368	73	88	76	88	/	/	/	140	9.8	10.7
65	2-1/2	330	419	89	110	95	110	/	/	/	150	12.6	13.4
80	3	356	381	105	118	114	118	250	550	220	170	14.8	16
100	4	432	457	132	143	146	146	250	650	250	190	28	28.7
125	5	508	508	163	177	172	177	250	750	265	210	38	42
150	6	559	610	190	202	200	202	320	/	365	/	63	68
200	8	660	373	252	265	252	265	350	/	385	/	140	150
250	10	787	838	310	325	310	325	400	/	475	/	245	225
300	12	838	965	365	385	365	385	500	/	535	/	320	333
350	14	889	1029	420	442	420	442	500	/	610	/	355	365
400	16	991	1130	476	505	480	505	500	/	675	/	364	385

*Face to face dimensions herein are according to ASME B16.10,

*More dimension specifications are available on request.

LINED PLUG VALVE

DIMENSION (socket-weld end/1.6~4.0 MPa)



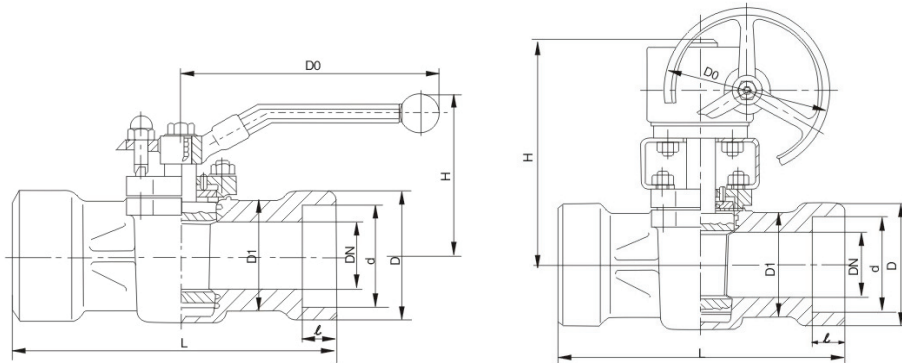
DN	NPS	L	D1		D	D0		H		Weight (kg)	
			1.6~2.5 MPa	4.0 MPa		Worm	Lever	Worm	Lever	1.6~2.5 MPa	4.0 MPa
15	1/2	130	28		32	/	170	/	80	3.3	3.5
20	3/4	150	33		38	/	170	/	90	4.2	4
25	1	160	38		46	/	200	/	100	5.8	6.3
32	1-1/4	180	45		55	/	250	/	110	6.8	7.3
40	1-1/2	200	56		63	/	250	/	120	8	8.5
50	2	230	70		76	/	320	/	140	9.1	9.7
65	2-1/2	290	88		95	/	450	/	150	11.8	12.4
80	3	311	104		114	250	550	220	170	13.8	14.4
100	4	350	126		146	250	650	250	190	26.1	27.2
125	5	400	150		172	250	750	265	210	30.2	33.5
150	6	480	175	185	200	320	/	365	/	48	58
200	8	600	226	235	251	350	/	385	/	108	130
250	10	730	280	290	305	400	/	475	/	180	240
300	12	850	332	345	360	500	/	535	/	290	315
350	14	980	384	395	395	500	/	610	/	311	340
400	16	1100	435	450	450	500	/	675	/	320	350
450	18	1180	487	502	500	500	/	735	/	355	375
500	20	1250	540	555	560	500	/	760	/	375	388

*Face to face dimensions herein are according to DIN 3202 S7.

*More dimension specifications are available on request.

LINED PLUG VALVE

DIMENSION (socket-weld end/10.0~16.0 MPa)



DN	NPS	L	D1		D		D0		H		Weight (kg)	
			10.0 MPa	16.0 MPa	10.0 MPa	16.0 MPa	Worm	Lever	Worm	Lever	10.0 MPa	16.0 MPa
15	1/2	165	31	41	32	41	/	170	/	80	4.1	4.4
20	3/4	190	36	46	38	46	/	170	/	90	4.9	5.3
25	1	216	41	51	46	51	/	200	/	100	6.6	7
32	1-1/4	229	49	61	55	61	/	250	/	110	7.7	8.1
40	1-1/2	241	59	70	63	70	/	250	/	120	8.6	9.1
50	2	292	73	88	76	88	/	320	/	140	10.2	10.7
65	2-1/2	330	89	110	95	110	/	450	/	150	13.1	13.7
80	3	356	105	118	114	118	250	550	220	170	15.5	16.2
100	4	432	132	143	146	146	250	650	250	190	28	28.7
125	5	508	163	177	172	177	250	750	265	210	38	42
150	6	559	190	202	200	202	320	/	365	/	63	68
200	8	660	252	265	252	265	350	/	385	/	140	150
250	10	787	310	325	310	325	400	/	475	/	245	225
300	12	838	365	385	365	385	500	/	535	/	320	333
350	14	889	420	442	420	442	500	/	610	/	355	365
400	16	991	476	505	480	505	500	/	675	/	364	385

*Face to face dimensions herein are according to DIN 3202 S12.

*More dimension specifications are available on request.